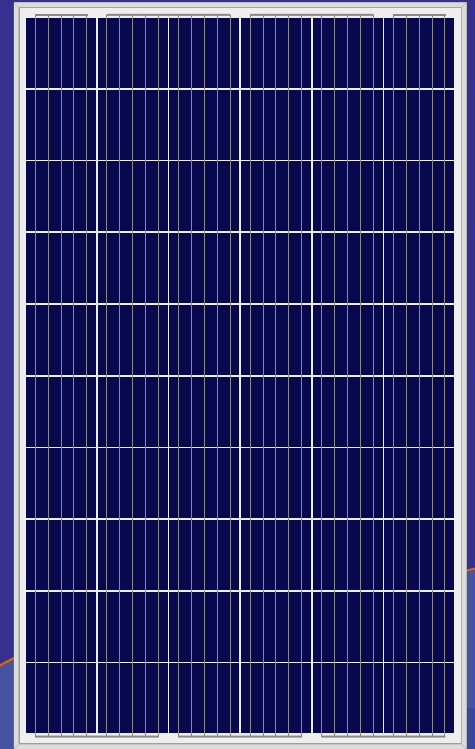


Standard PV Module

Poly

DHP60

265W-280W

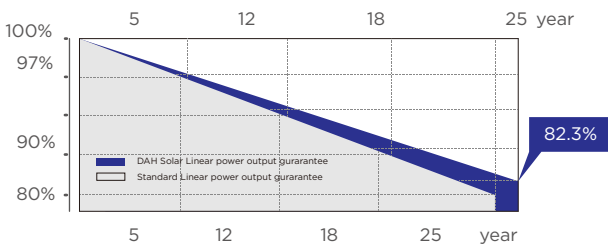


Standard PV module is composed by a plurality of monocrystalline or polycrystalline cells in series (generally 60cells and 72 cells), combined with two layers of EVA ,glass, backsheet and frame. It has very stable power generation efficiency between 17% and 19%. Due to factors such as stability, safety, and excellent price, Standard PV modules are widely used in industrial and commercial roofs, ground power stations, household and poverty alleviation power stations.



QUALITY GUARANTEE

LINEAR POWER OUTPUT GUARANTEE








10 years 10-year material & technology warranty

25 years 25-year linear power output warranty

0~+5W
Positive Tolerance

17.12%
Max Module Eff.(%)

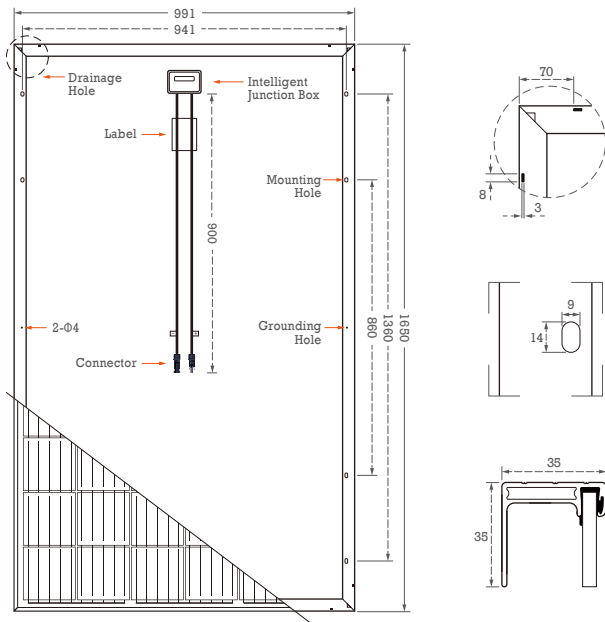
PRODUCT PERFORMANCE ADVANTAGE

-  Select Grade A crystalline silicon solar cells, high-power output with cost-effective
-  Preferred packaging materials and strict process technology, excellent PID free performance
-  Certified by Dust-Sand, Salt-Mist, Ammonia etc. weather resistance tests, strong environmental adaptability
-  Highly transparent coated tempered glass to increase light absorption and reduce power loss
-  Optimized frame design to improve PV module load capacity and appearance protection

Standard PV Module

DHP60 265W-280W

Design



Mechanical Specification

| | |
|-------------------|---|
| Cells Type | Poly 156.75×156.75mm |
| Weight | 18.6kg |
| Dimension (L×W×T) | 1650×991×35mm |
| Output Cables | TUV, Length 900mm, 4.0mm ² |
| No.of Cells | 60 (6×10) |
| Glass | 3.2mm High Transmission, Antireflection Coating |
| Junction box | IP68, 3 Bypass Diodes |
| Connector | QC4 |
| Packing | 30pcs/pallet, 400pcs/20GP, 924pcs/40HQ |

Operating Parameters

| | |
|------------------------------------|----------------|
| Maximum system voltage | 1000V/1500V DC |
| Operating Temperature | -40 ~ +85°C |
| Maximum series fuse rating | 20A |
| Snow load, frontside | 5400Pa |
| Wind load, backside | 2400Pa |
| Nominal operating cell temperature | 45°C±2°C |
| Application level | Class A |

Electrical Characteristics(STC)

| Module Type | DHP60-265W | DHP60-270W | DHP60-275W | DHP60-280W |
|---------------------------------|---|------------|------------|------------|
| Maximum Power (Pmax) | 265W | 270W | 275W | 280W |
| Open-circuit Voltage (Voc) | 38.3V | 38.4V | 38.5V | 38.7V |
| Maximum Power Voltage (Vmp) | 30.8V | 30.9V | 31.1V | 31.4V |
| Short-circuit Current (Isc) | 9.10A | 9.18A | 9.25A | 9.34A |
| Maximum Power Current (Imp) | 8.61A | 8.74A | 8.85A | 8.92A |
| Module Efficiency (%) | 16.21% | 16.51% | 16.82% | 17.12% |
| Power Tolerance | 0~+5W | | | |
| Temperature Coefficient of Isc | 0.05%/°C | | | |
| Temperature Coefficient of Voc | -0.32%/°C | | | |
| Temperature Coefficient of Pmax | -0.41%/°C | | | |
| Standard Test Environment | Irradiance 1000w/m ² , Cell temperature 25°C, Spectrum AM1.5 | | | |

Electrical Characteristics(NOCT)

| Module Type | DHP60-265W | DHP60-270W | DHP60-275W | DHP60-280W |
|-----------------------------|---|------------|------------|------------|
| Maximum Power (Pmax) | 197W | 200W | 204W | 207W |
| Open-circuit Voltage (Voc) | 35.5V | 35.6V | 35.7V | 35.8V |
| Maximum Power Voltage (Vmp) | 28.6V | 28.7V | 28.9V | 29.1V |
| Short-circuit Current (Isc) | 7.35A | 7.41A | 7.47A | 7.54A |
| Maximum Power Current (Imp) | 6.89A | 6.97A | 7.06A | 7.15A |
| Standard Test Environment | Irradiance 800w/m ² , Cell temperature 20°C, Spectrum AM1.5, Wind speed 1m/s | | | |